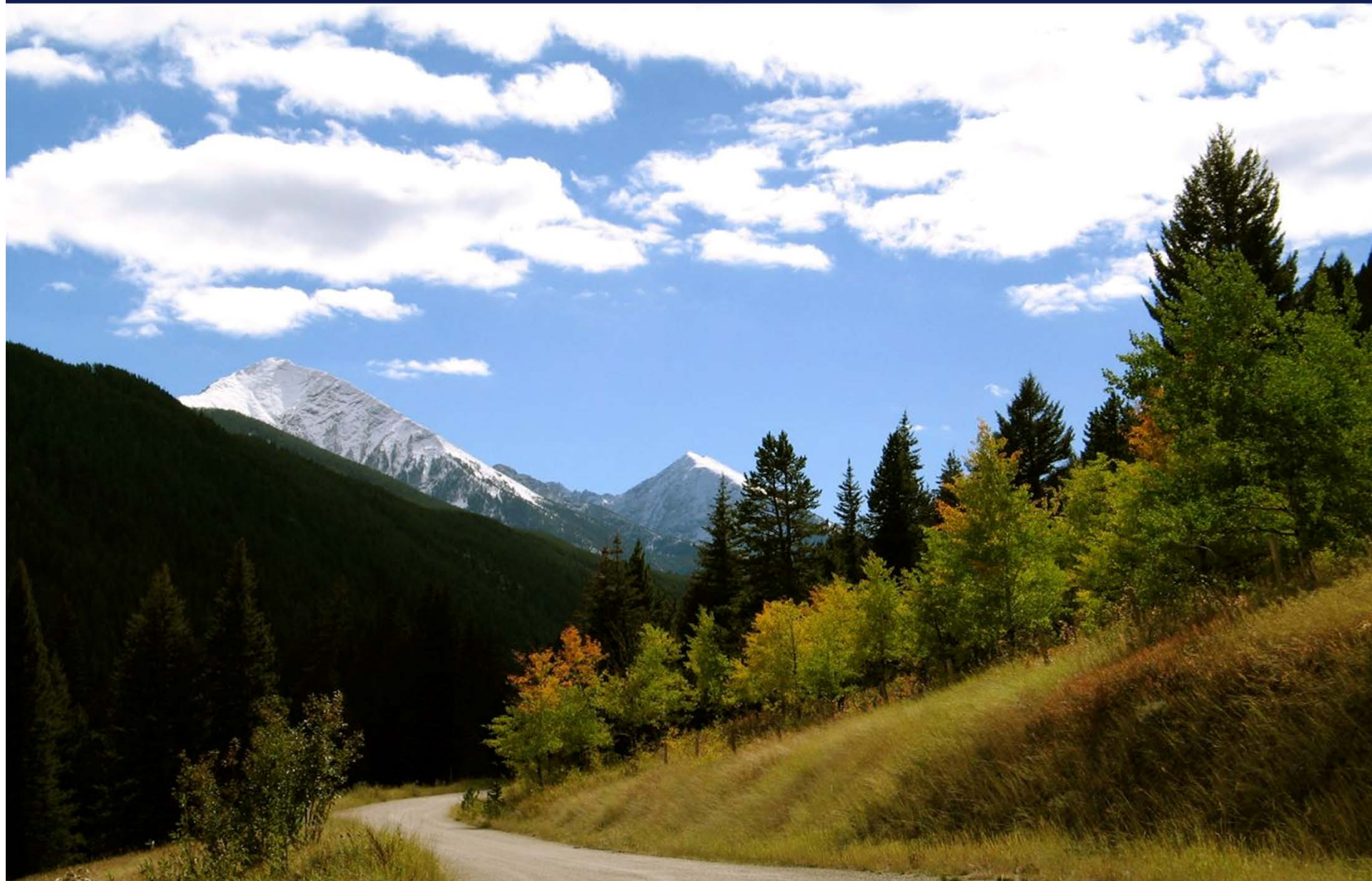
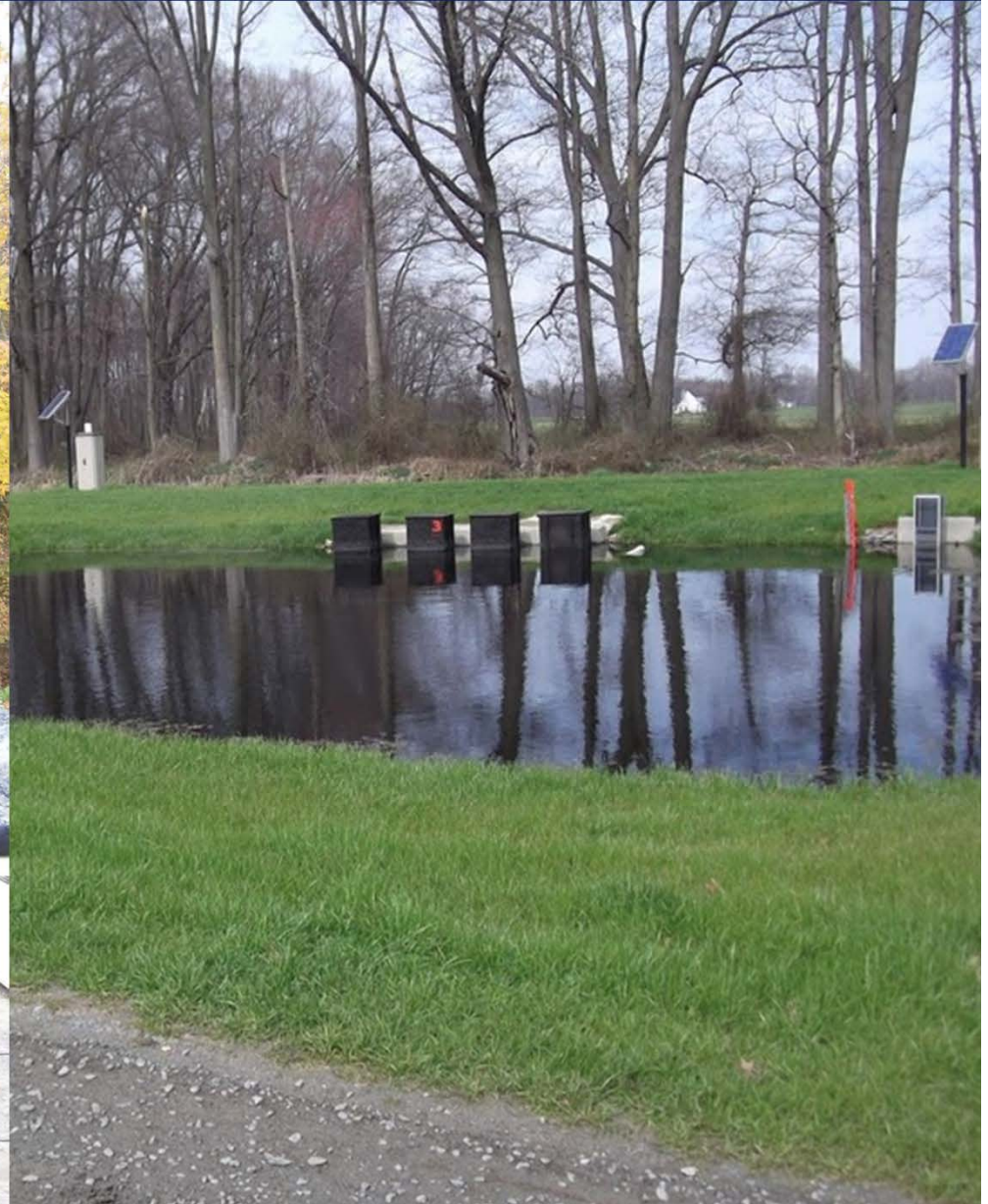


United States Department of Agriculture
Natural Resources Conservation Service









After re-vegetation

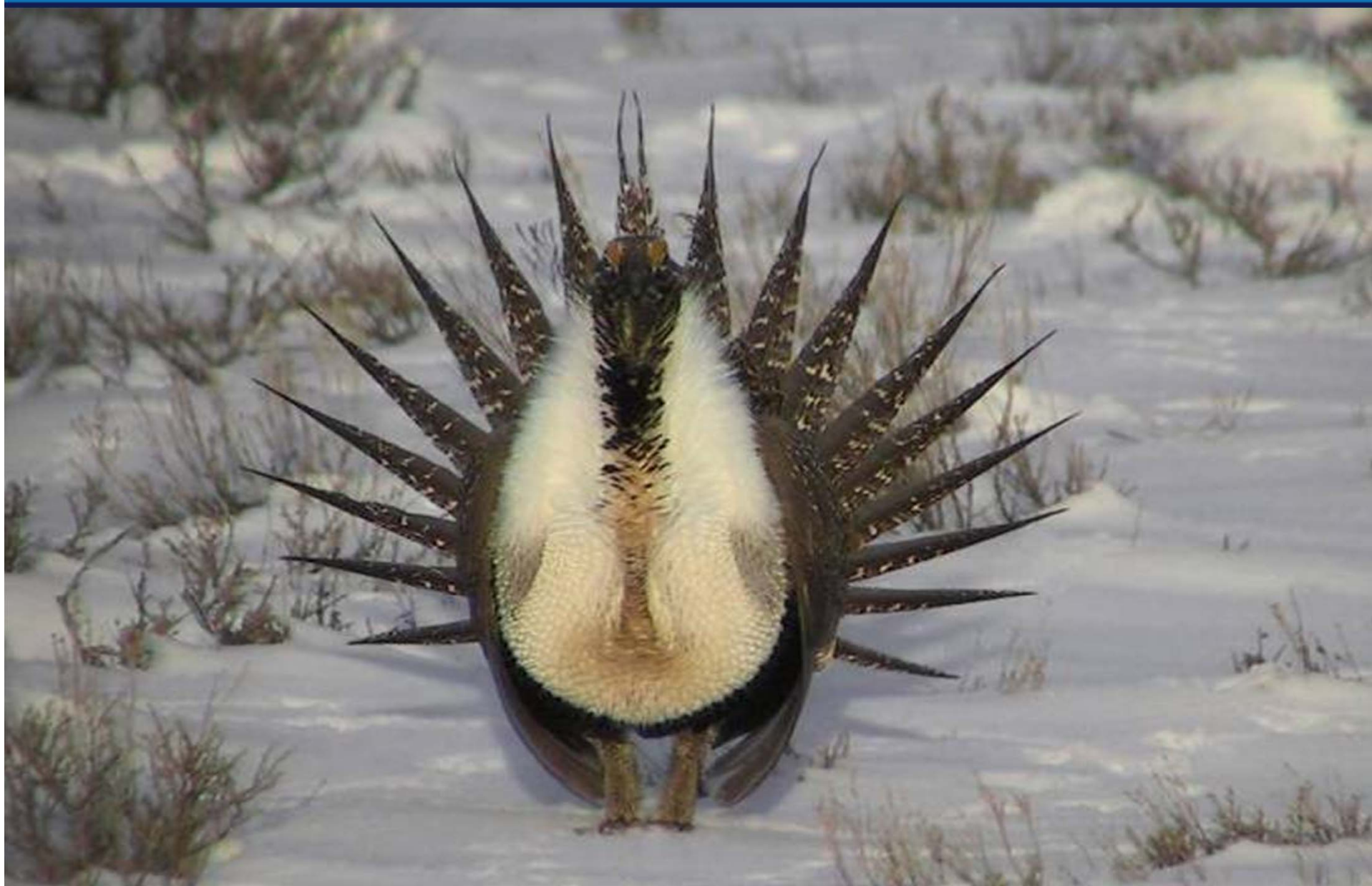


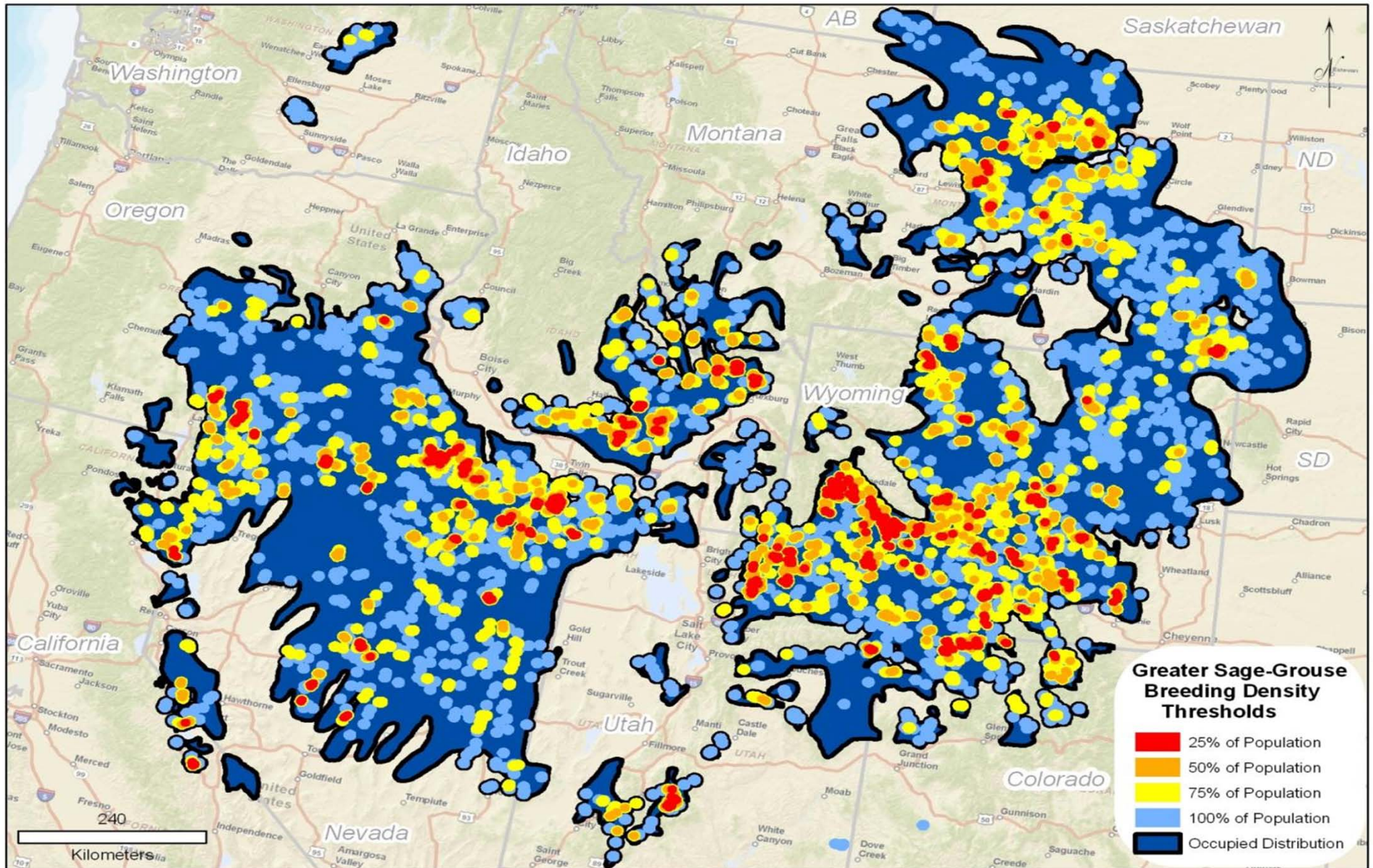


United States Department of Agriculture
Natural Resources Conservation Service



United States Department of Agriculture
Natural Resources Conservation Service









Marked or moved 350 miles of High Risk fence



2-inch increase in grass height



8% increase in nest
success



equates to 10% increase
in population growth

Sustainable grazing systems on 1.3 million acres



United States Department of Agriculture
Natural Resources Conservation Service







United States Department of Agriculture
Natural Resources Conservation Service



United States Department of Agriculture
Natural Resources Conservation Service



United States Department of Agriculture
Natural Resources Conservation Service



United States Department of Agriculture
Natural Resources Conservation Service





United States Department of Agriculture
Natural Resources Conservation Service









United States Department of Agriculture
Natural Resources Conservation Service



Before Forest Stand Improvement



After Forest Stand Improvement



United States Department of Agriculture
Natural Resources Conservation Service



United States Department of Agriculture
Natural Resources Conservation Service









United States Department of Agriculture
Natural Resources Conservation Service



United States Department of Agriculture
Natural Resources Conservation Service



United States Department of Agriculture
Natural Resources Conservation Service



United States Department of Agriculture
Natural Resources Conservation Service



United States Department of Agriculture
Natural Resources Conservation Service





United States Department of Agriculture
Natural Resources Conservation Service



United States Department of Agriculture
Natural Resources Conservation Service





United States Department of Agriculture
Natural Resources Conservation Service



United States Department of Agriculture
Natural Resources Conservation Service





United States Department of Agriculture
Natural Resources Conservation Service





United States Department of Agriculture
Natural Resources Conservation Service



United States Department of Agriculture
Natural Resources Conservation Service



United States Department of Agriculture
Natural Resources Conservation Service



United States Department of Agriculture
Natural Resources Conservation Service



United States Department of Agriculture
Natural Resources Conservation Service

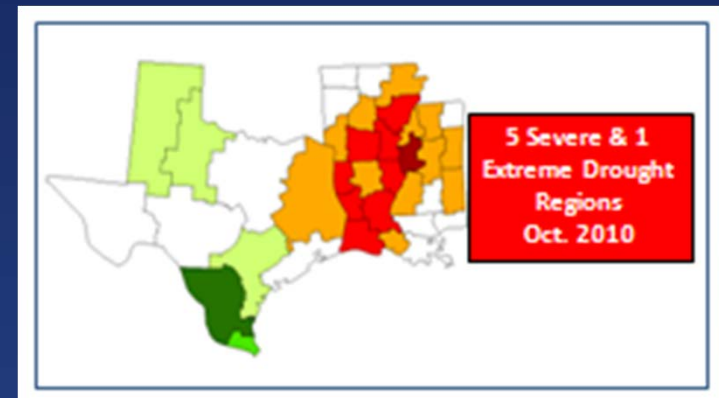
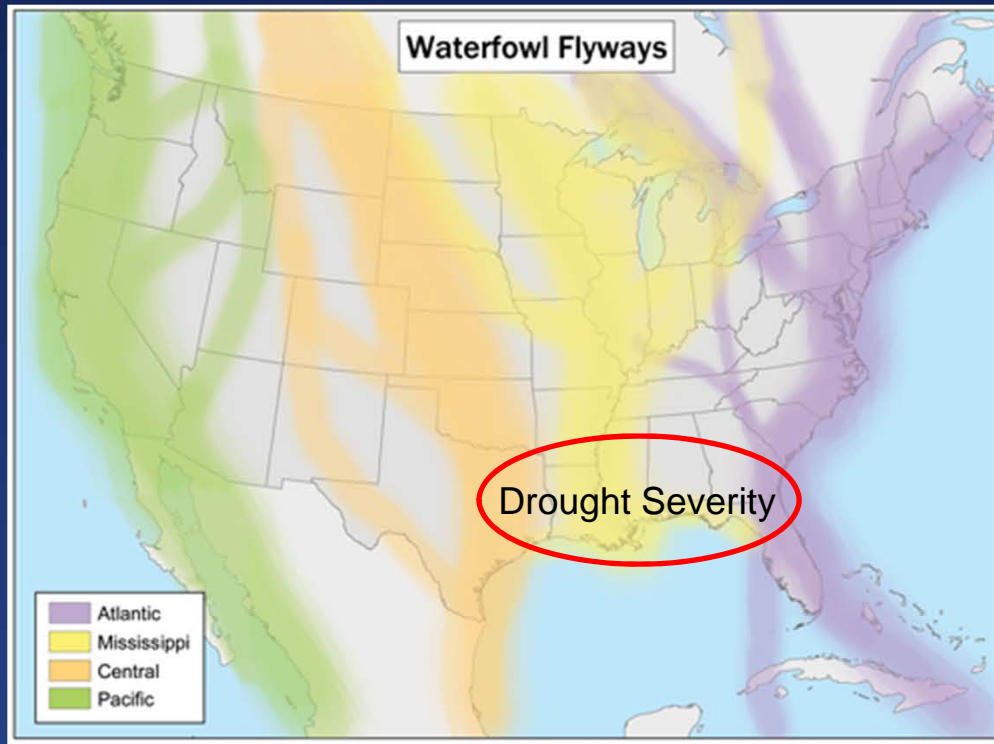


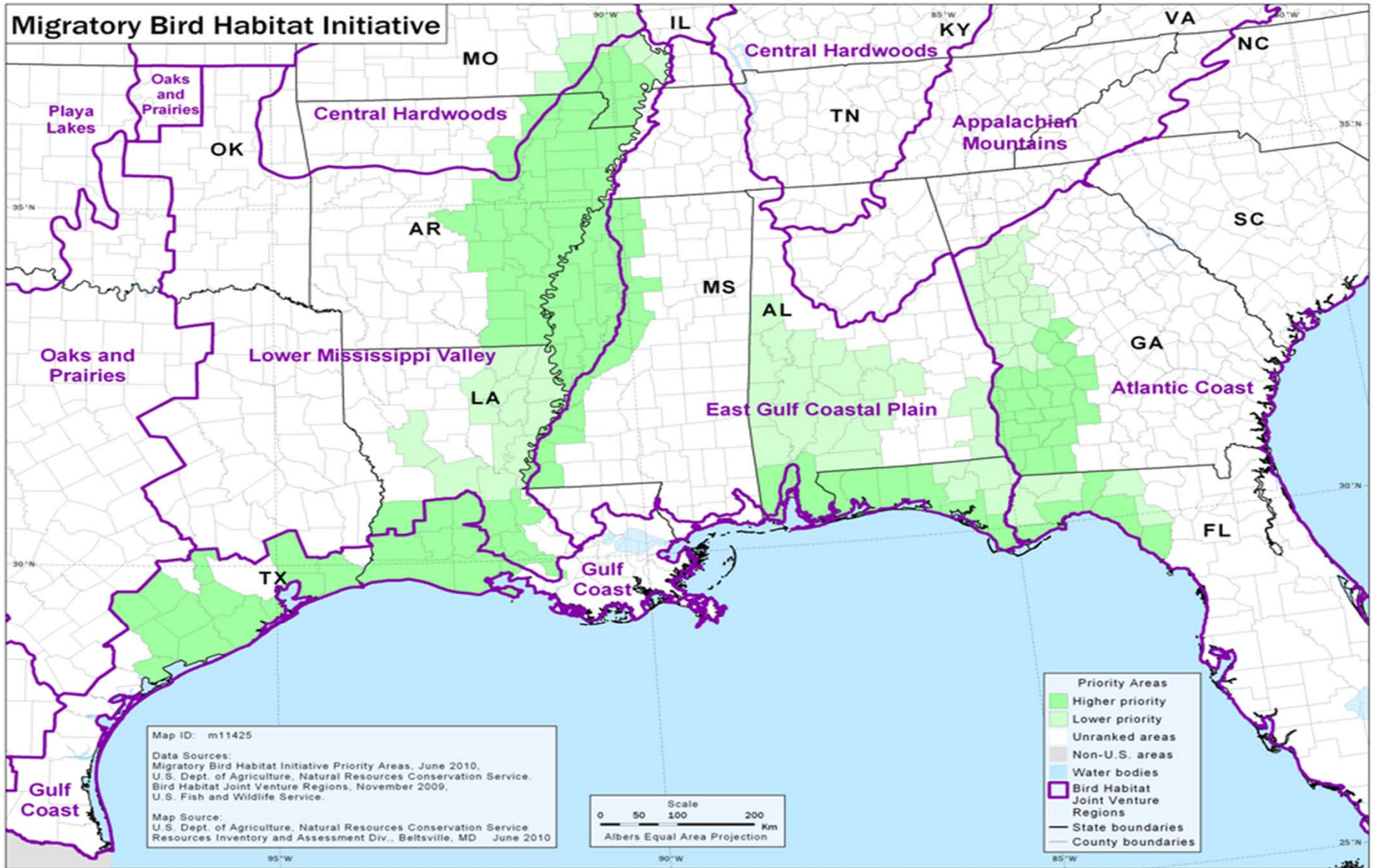






Deepwater Horizon - April 2010





United States Department of Agriculture
Natural Resources Conservation Service



United States Department of Agriculture
Natural Resources Conservation Service



United States Department of Agriculture
Natural Resources Conservation Service



United States Department of Agriculture
Natural Resources Conservation Service

